

TEMPLE HOYNE BUELL THEATRE



GUERRILLA BOX

A PRODUCT BY DISPLAY DEVICES



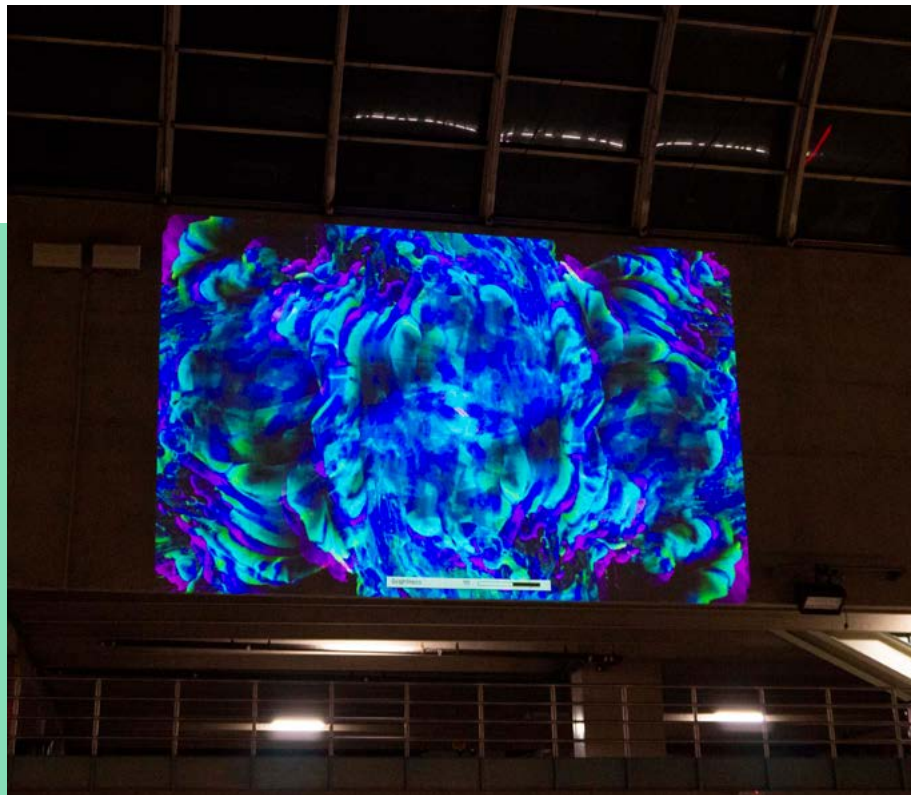
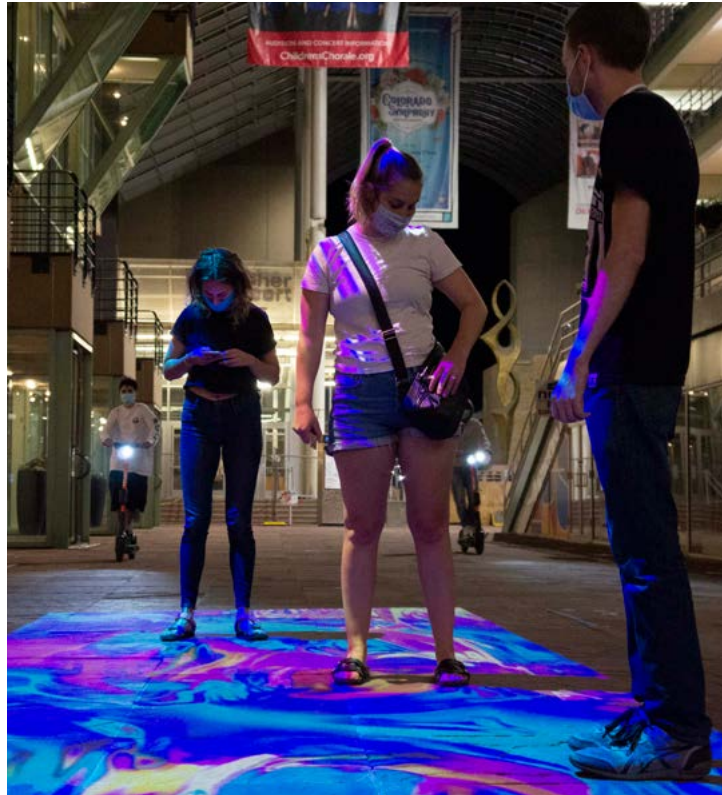
Introducing the latest product in DDI's suite of projection services.

For over 30 years, DDI has been a one stop shop for turnkey display devices. As experienced doers, we've stayed on the cutting edge of technology to deliver the best custom products for our customers.

A fully integrated, portable outdoor projection system.

By creating the Guerrilla Box, we've made projection technology much more accessible. Never before has such a powerful, fully integrated projection system been available in an affordable, portable package.

User-friendly and built for versatility.



Stay flexible

Portable design makes it easy to wheel the Guerrilla Box in and out of elevators. This allows flexibility to shoot from various locations without a permanent infrastructure investment.

Just add content

The projector is easy to program, equipped with a cloud-based dashboard. Upload content remotely or play straight from your laptop using direct or remote data connection.

Premium features that maximize quality.



21,000 lumen
laser projector
with 2:1 lens



Single-line
power source



Weather-proof and
climate controlled
enclosure



Full HD
resolution

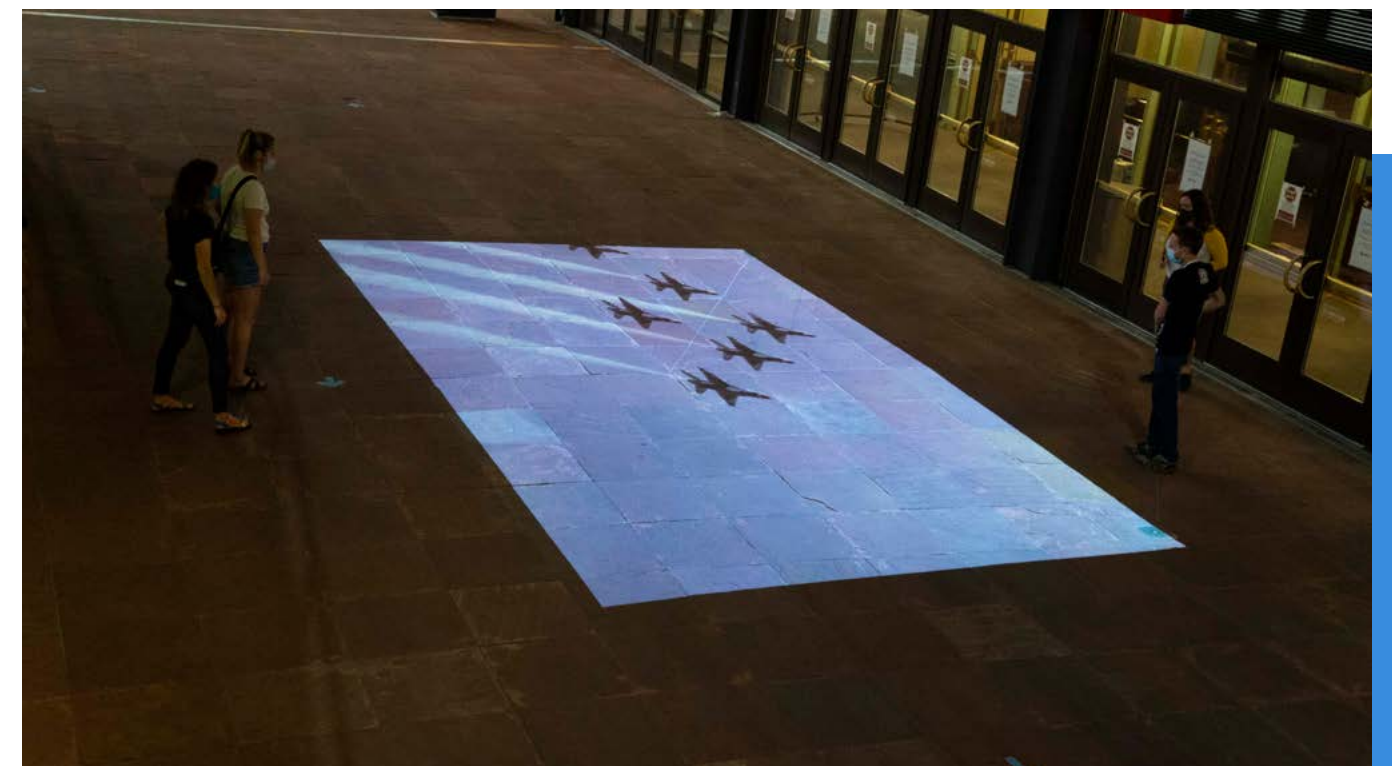
Countless ways to share content.

Build community

Support local and bring the community together through projection. Display art installations in perpetuity or at special events, such as light festivals or botanic gardens.

Share critical messaging

Digital projection can also be used as a way to share important public messaging. Send standalone alerts or use projection to maximize communication during events.



For inquiries

sales@displaydevices.com

Software Controls & Features

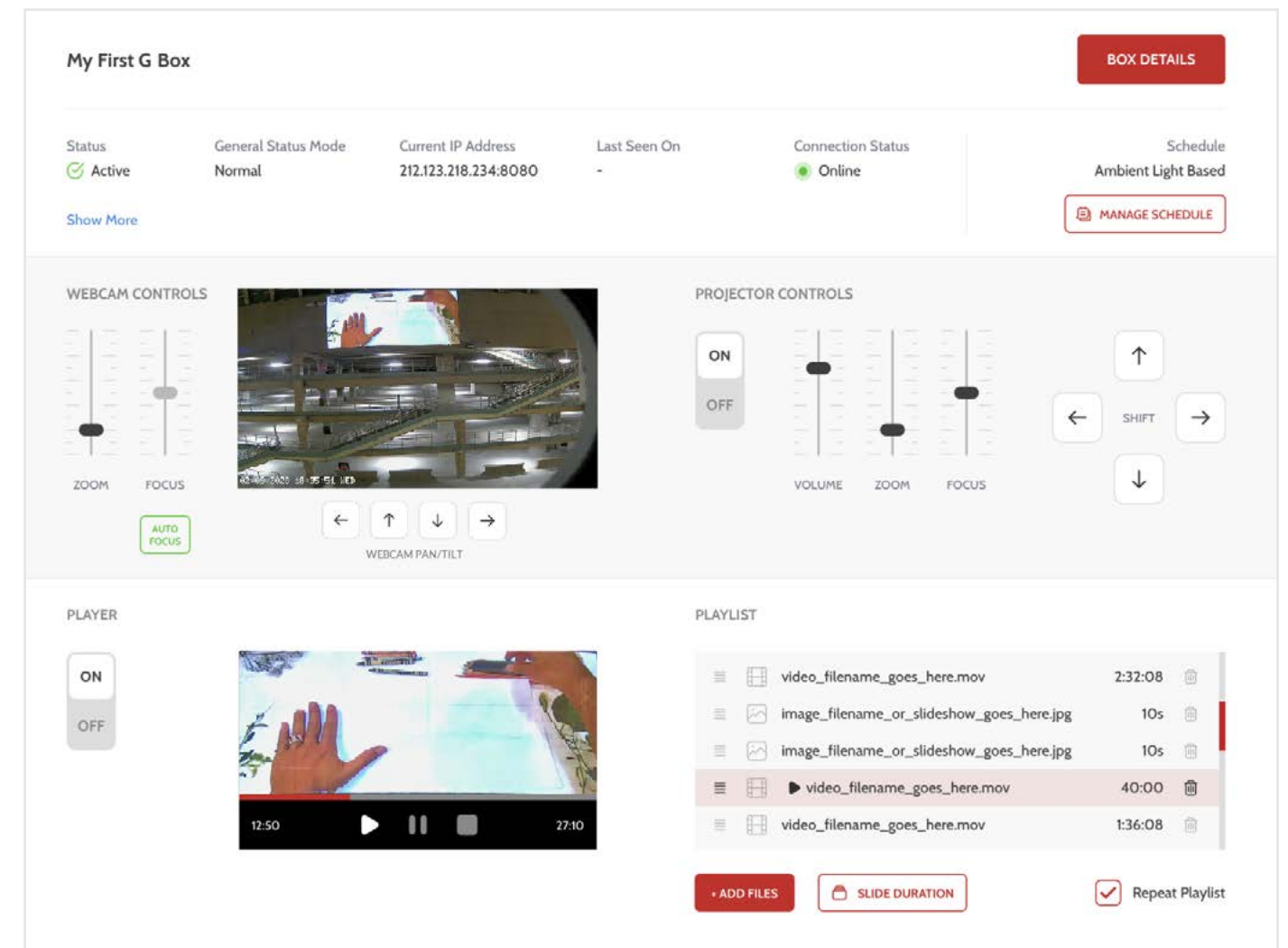
GUERRILLA BOX DASHBOARD

Control Functions

- Cloud based user control of all major functions
- Media playlist to run after dark or on absolute time schedule
- Projector – zoom, focus, lens shift
- Feedback Camera – current view, zoom, focus, pan, tilt
- Media Player Output – currently playing media
- Playlist editor – load, delete, move videos and slides
- Volume Control (to external jack)

Hardware Specifications

- Projector – DPI M-Vision Laser Projector 21K
- Feedback Camera – HD 1080P Pan/Tilt 10X Optical Zoom
- Media Player/Control internal PC
- Wireless 4G or Wired Ethernet connectivity
- Environmental AC - heating and 10,000 BTU cooling
- External Connectors – HDMI, 3.5mm stereo jack, projector remote jack, RJ45 Ethernet
- Power – 208/240 AC, 20 Amp, L6-20P Plug



The screen above shows the user dashboard per box. This screen is the primary control of the unit. There are many other screens, such as list of all boxes per user, configuration for company, user, and enclosures, and detail reporting of units. There is also a separate website for monitoring environmental data of each enclosure.

Digital Projector Specs

M-VISION LASER 21000 WU

21,000 ISO / 18,600 ANSI Lumens | Contrast Ratio: 10,000:1 (Dynamic Black)
Part Number: 120-604

Color System

Blue + Red Laser and 4-segment color wheel

Display Type

1 x 0.96" DarkChip™ DMD™

DMD Specification

1920 x 1200 pixels native display, Fast transit pixels for smooth greyscale and improved contrast. Aspect Ratio: 16x10 Fill Factor 87%

Inputs/Outputs

VIDEO & COMPUTER			COMMUNICATION & CONTROL		
Type	Connector	QTY	Type	Connector	QTY
DisplayPort 1.1a	DisplayPort	2	3D Sync Out	BNC	1
HDMI 1.4b	HDMI	2	3D Sync In	BNC	1
3G-SDI in	BNC	1	LAN	RJ45	1
3G-SDI out	BNC	1	RS232	9-pin D-Sub	1
HDBaseT	LAN RJ45	1	Wired Remote	3.5mm Stereo Jack	1
			12V Trigger	3.5mm Stereo Jack	2

Lenses

LENSES			
Lens	Part No.	Optimized Focus Range*	Lens Shift
4.00 - 7.00 : 1 zoom	120-628	4m - 42m	Vert: 0.5 (U) 0.3 (D) frame, Hor: 0.15 (L) 0.15 (R) frame
2.00 - 4.00 : 1 zoom	120-627	2.5m - 42m	Vert: 0.5 (U) 0.3 (D) frame, Hor: 0.15 (L) 0.15 (R) frame
1.20 - 1.56 : 1 zoom	120-625	1m - 8m	Vert: 0.5 (U) 0.5 (D) frame, Hor: 0.15 (L) 0.15 (R) frame
1.50 - 2.00 : 1 zoom	120-626	2m - 12m	Vert: 0.5 (U) 0.3 (D) frame, Hor: 0.15 (L) 0.15 (R) frame
0.9 - 1.2 : 1 zoom	120-624	0.92m - 13.46m	Vert: 0.45 (U) 0.45 (D) frame, Hor: 0.15 (L) 0.15 (R) frame

* Lens focal ranges above are the optimised distances but are likely to focus further, please contact your RSM for more details. Lens ratio tolerances: E-Vision Series: +/-3%. HighLite Series: +/- 5%. M-Vision Series: +/- 2%. Titan Series: +/-2%, INSIGHT Series: +/-2%,

Key Features

Red Laser Assist

• Uses blue and red laser diodes for increased color fidelity and highly accurate colors.

Video & Graphics Processing

• HDMI 1.4b for Side by Side, Frame Packing, Frame Sequential & TopBottom 3D Formats.
• Dual Flash Processing can be used to multiply the displayed frame rate for 3D sources.
• Dual Pipe Processing: Two sources in parallel for Left and Right eyes.
• Synchronization of active glasses.
• 3G-SDI with loop-through.
• 24p and 1080p native display.

Geometry Correction

• Cornerstone, Vertical & Horizontal Keystone, Pincushion & Barrel, and Image Rotation.
• Blanking control for custom input window sizing.
• Scaling for fixed aspect ratio screens.

Edge Blending

• Correction for non-active pixels at the edge of the display.

Picture in Picture

• Two sources can be displayed either one within the other (PIP), or side by side, with the original aspect ratios maintained.

HDBaseT® Interface

• Built in support for transmission of uncompressed High Definition Video over standard CAT5e/6 LAN cable.
• Allows the projector to be placed up to 100m from source with low cost cabling.

Color Processing

Powerful seven-point color correction for accurate color matching.

Projector Controller Software

• Intuitive user interface for network control.
• Simultaneous control of user-defined groups of projectors.
• At-a-glance monitoring of projector status.

Projector Automation

• Real-time clock provides daily on/off automation.

Installation

• Integrated stacking mount pins.
• Eye bolts included for easy rigging.

Source Compatibility

• 3GSDI is SMPTE 292M, SMPTE 259M-C and SMPTE 424M compliant.
• HDMI including Deep Color™ processing.
• Graphics standards up to 1920 x 1200 resolution at 60Hz via HDMI or DisplayPort.

Additional Specifications

3D Formats Supported

Frame Packing; Dual Pipe; Frame Sequential; Side By Side (half); Top and Bottom

HDTV Formats Supported

1080p (24Hz, 25Hz, 30Hz, 50Hz, 60Hz), 1080i (50Hz, 60Hz), 720p (50Hz, 60Hz)

Computer Compatibility

Up to 1920 x 1200

Bandwidth

165 MHz on analog RGB
165 Megapixels per second on HDMI

Remote Control

Addressable IR Remote Control, wireless and wired; On-Board keypad

Automation Control

Crestron RoomView® Connected; PJLink Class 1; LAN; RS232; AMX (Device Discovery); Served web page

Color Temperature

3200K to 9300K

Illumination Type

Laser Light Source

Typical Illumination Life

20,000 hours

Lens Mount

Motorised and programmable shift, zoom and focus.

Mechanical Mounting

Front/Rear Table
Front/Rear Ceiling
Adjustable Front/Rear Feet

Orientation

Table Top or Inverted: Yes
Pointing Up: Yes
Pointing Down: Yes
Roll (Portrait): Yes

Power Requirements

110V~130Vac/ 50~60Hz 180V~240Vac/ 50~60Hz single phase * Note that in 120V operation, the projector will be at 65% brightness

Power Consumption

Typical 1900W @ 240VAC in Normal mode
Typical 1250W @ 110VAC in Normal mode

Thermal Dissipation

Typical 6482 BTU/Hour @ 220VAC in Normal mode; Typical 4265 BTU/Hour @ 110VAC in Normal mode; BTU/Hour

Operating/Storage Temperature

Operating: 0 to 35C (32 to 95F)
Operating: >35 (95F) Projector automatically set to eco mode
Storage: -20 to 60C (-4 to 140F)

Operating Humidity

10% to 90% relative, non-condensing

Fan Noise

Normal mode: 49.6 dBA max, 42 dBA typical; Eco mode: 47.6 dBA max, 39dBA typical

Weight (Chassis Only)

52 kg
115 lb

Dimensions

L: 74.8cm W: 53.0cm H: 24.8cm
L: 29.5in W: 20.9in H: 9.8in

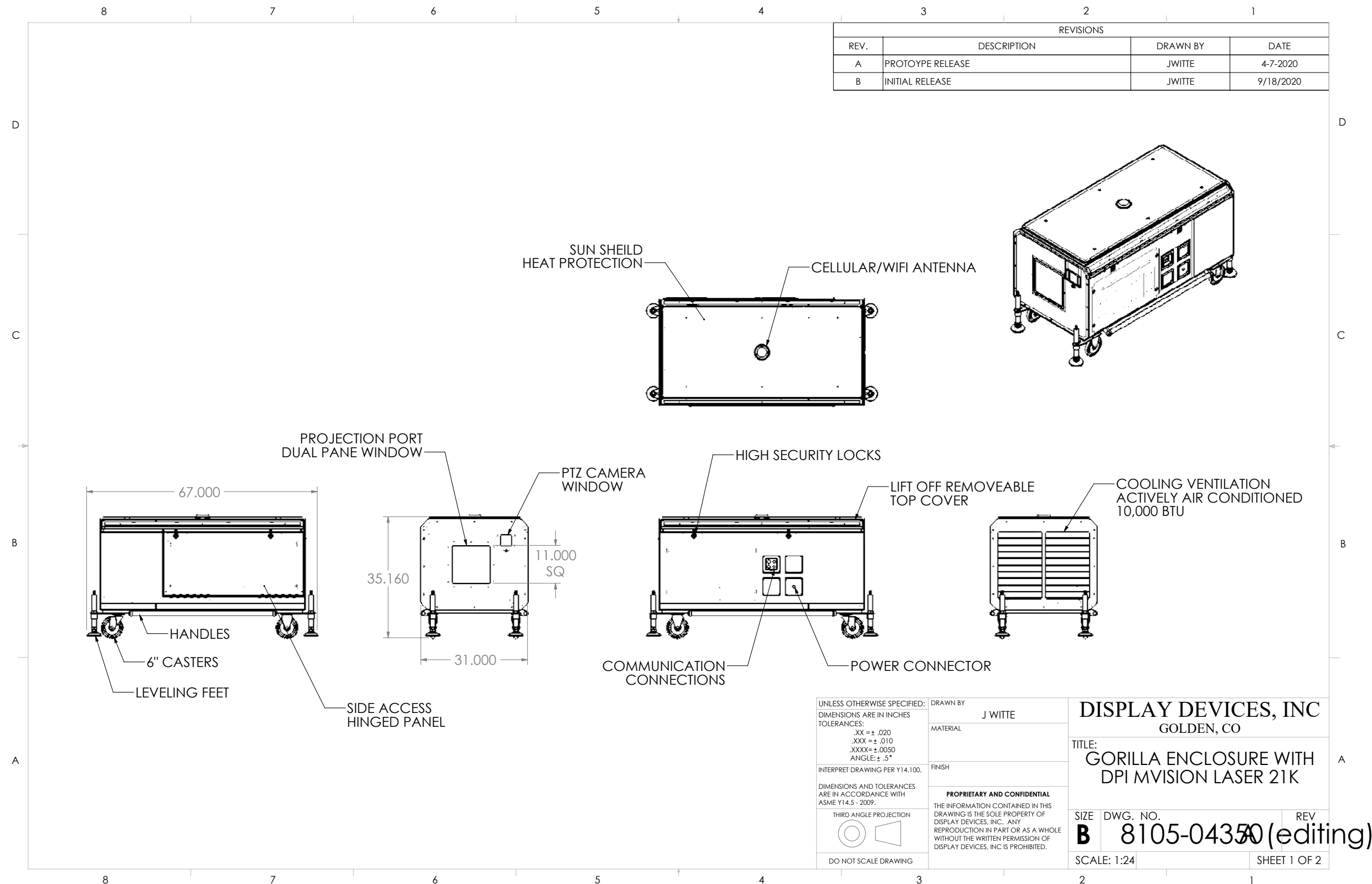
Safety & EMC Regulations

UL / cUL, CB, CCC, FCC Class 1, CE, BIS, RoHS 2, IEC EN 60825-1 Class 3R Laser Product, IEC EN 62471-5 Risk Group 2

Accessory

Infrared Remote (replacement), Part No. 117-780

Enclosure Design



Enclosure Design cont.

ITEM #	QTY	PART #	PURCHASED PART #	DESCRIPTION	ITEM #	QTY	PART #	PURCHASED PART #	DESCRIPTION
1	1	8105-04367		BOTTOM FRAME WELDMENT	36	1	8105-04355		LID WELDMENT
2	1	8105-04426		SIDE PANEL WELDMENT, LH	37	1		4450-10300	4G MULTIBAND ANTENNA
3	1	8105-04425		SIDEPANEL, WELDMENT, RH	38	1	8275-02547		DUAL BRIGHTNESS SENSOR BOARD HOUSING
4	1	8105-04428		BOTTOM PANEL WELDMENT	39	1	8105-04477	5800-17400	BULB SEAL, TRIMLOK, 17.00 LG
5	1	8105-04353		END PLATE, FRONT	40	4	8105-04457		
6	1	8105-04390		AC - GORILLA ENCLOSURE	41	2		TBD	CASTER URETHANE 6" MCM# 2502T590
7	1	8105-04361		LOUVER WELDMENT	42	1		3450-21200	4 SQUARE ELECTRICAL BOX
8	2		4600-20580	ALUM PIANO HINGE 12"	43	1		3450-23970	4IN SQ COVER, 20A RECEPTACLE, NEMA
9	1	8105-04093		GLASS ASSY	44	1	8105-04469		CONNECTOR POCKET WELDMENT
10	2	8105-04092		WINDOW SEAL	45	2		TBD	URETHANE CASTER 6", MCM#2502T540
11	1	8105-04091		WINDOW RETAINER	46	1	8105-04470		SIDEPANEL, WELDMENT, RH
12	2	8105-04376		T-SLOT RAIL, 38.00" LG.	47	1	8105-04475	5800-18510	BULB SEAL, TRIMLOK
13	2	8105-04375		T-SLOT RAIL MTG BRKT	48	2	8105-04476	5800-18510	BULB SEAL, TRIMLOK
14	4		4600-20690	SWIVEL LEVELING MOUNT MCM 6103K120	49	1	8105-04478	5800-17400	BULB SEAL, TRIMLOK, 39.61 LG
15	4	8105-04377		LEVELER SHAFT	50	28		TBD	1/4-20 X 3/8 SS SECURITY TORX BUTTON HEAD SCREW
16	8		6000-16640	HEX NUT, JAM, 1.00-8, STL, ZI	51	28		TBD	SEALING O-RING FOR 1/4" SCREW, MCM#9452K180
17	4		4600-19500	SOUTHCO PANEL LATCH	52	1	8105-04484		SIDE DOOR UPPER SEAL RH
18	4		4600-19501	SOUTHCO PANEL LATCH RECEPTACLE	53	1	8105-04481		SIDE DOOR UPPER SEAL LH
19	1	8105-04364		SUN SHIELD	54	1	8105-04485		CAMERA MOUNT
20	2	8105-04459		RAIN GUTTER WELDMENT	55	1		TBD	CAMER PTZ, AVIPAS, AV-1080G
21	2		5800-18510	BULB SEAL, TRIMLOK					
22	1		5800-17400	BULB SEAL, TRIMLOK, 57.38" LG					
23	4		4600-20740	CAMLOCK, OCTAGON, OUTDOOR					
24	4		4600-20750	FLAT CAM, 50MM					
25	2	8105-04403		T-SLOT UPRIGHT					
26	1	8105-04420		ELEC PANEL ASY 1					
27	1	8105-04421		ELEC PANEL ASY 2					
28	1		3450-00076	BOX, 2 GANG, METAL					
29	1	8105-04417		JBOX COVER, POWER					
30	1	8105-04436		PROJECTOR LANDSCAPE KIT					
31	1	8105-04437		PROJECTOR PORTRAIT KIT					
32	1	8105-04442		WINDOW, CAMERA					
33	1	8105-04444		RETAINER, CAMERA WINDOW					
34	2	8105-04446		JBOX COVER, BLANK					
35	1	8105-04451		BREAKER BOX ASY					

SIZE DWG. NO. REV
B 8105-04350 (editing)
 SCALE: 1:32 SHEET 2 OF 2