



Pole Offset

- For working around obstructions like HVAC
- Provides up to 4" of horizontal offsets
- Offset plate has male and female 2" NPT threads
- Cable pass-through
- Locate projector directly below T-grid

Dimensions

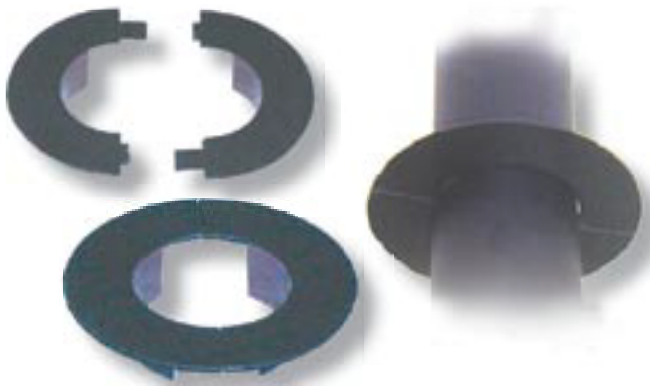
- OS-4 1.5"h x 6.5" w x 3.0"d 1 lb.

Couplings Reducer & Enlarger

- 15-2 adapts existing 1 1/2" poles to 2" mount
- 2-15 adapts 2" poles to 1 1/2" mount
- Black zinc coated

Dimensions

- 2-15 / 15-2 3"h x 2.5" w 1 lb.



Ceiling Trim Rings The Finishing Touch

- Two-part ring - snap compression together
- Magnetic interior holds to steel pole
- Slide up flush with ceiling
- Black, white, or primer grey
- For 2" diameter poles

Dimensions

- CTR 1.2"h x 4.0" w 1 lb.