

DISPLAY DEVICES

Anti-Theft Mount Installation Instructions

Ensure the ceiling structure is capable of holding at least **four times** the combined weight of the lift **and** projector. This is a **minimum** requirement. Also ensure that the ceiling structure is capable of holding at least **four times** the combined weight of the lift **and** projector. Again, this is a **minimum** requirement. Follow any local or state codes that apply to your specific area.

- 1.) Remove side access panel with supplied Torx bit.
- 2.) If your security system requires an NC relay, skip to #5. Remove top pan cover to access relay for security system interface. *NOTE: AT-LAN-PCM models require IP address assignment direct from a laptop at this time. Attach battery leads for this process then disconnect. See Software installation instructions.*
- 3.) If your security system interface requires a NO relay, set jumper on board to NO position. The factory preset is NC. See the attached photo of the circuit board.
- 4.) Add pull string into top pan exiting through threaded coupler. Secure string so it will not fall out.
- 5.) Determine length of pole. Shorten the supplied 8 conductor cable to the length of your pole. Solder the supplied DB9 connector to the cable. Feed finished cable through the threaded collar of the Top Pan. Plug molex connector into circuit board.
- 6.) Attach mount cable, projector signal, control and power cables to pull string and pull down and out the top pan. Projector power can be combined with the mounts power in the j-box or fed through the knockout to a discreet circuit if desired.
- 7.) Replace top pan cover.
- 8.) Attach top pan to structural points with ½" (M12) mounting hardware.
- 9.) Screw lock ring onto 2" pole, attach pull string to cables and pull through pole, then thread the pole into top pan. Tighten lock ring to prevent pole from rotating. If using an adjustable pole - set pole to proper length.
- 10.) Cut hole in proper position on ceiling tile, slide up pole and position on T-grid.
- 11.) Screw on lower lock ring, slide key box onto pole and then thread projector mount top onto pole. The key box is held in position by compression and faces toward the front (lens). Do not tighten lock ring until projector is aligned.
- 12.) Splice security system wires to two remaining wires on the molex connector at the circuit board – the jumper is set to NC at the factory. *NOTE: AT-LAN-PCM models require connection of the CAT5 cable.*
- 13.) Attach lower mount cage/band to projector and attach to upper mount.
- 14.) Epoxy projector away circuit to the chassis – it should be accessible incase projector must be removed for service.
- 15.) Attach projector signal, control and power cables – align projector.
- 16.) Insert ¼" TRS serial key into ¼" female on key box.
- 17.) Attach AC power leads with supplied wire nuts (Ground = green, Neutral = white, Hot = black) to the incoming power in the J box – tighten strain relief and replace cover.
- 18.) In the top pan, attach DC power leads to battery and replace access panel.
- 19.) Remove Key Box cover to adjust motion detector sensitivity – adjust the potentiometer closet to the wire leads. The LED will illuminate to show the units' sensitivity. The alarm will not sound until the serial key is removed. After adjusted, replace key box cover and remove serial key.
- 20.) Unit test: Remove serial key and tap with metal or shake. Alarm will sound.

If you're installing this unit in a manner that is incompatible with the above installation procedure, please call Display Devices Technical Services at (303) 412-0399 for further assistance. Items included with mount system: Top Pan, Key Box, Mount, (3) Wire Nuts, 10' pull string, (1) DB9 connector, (1) 10' Wire Harness Molex-to-bare wire, Serial Key, Projector mount hardware

DISPLAY DEVICES

AT-PCM – non LAN version
Internal Circuit Board

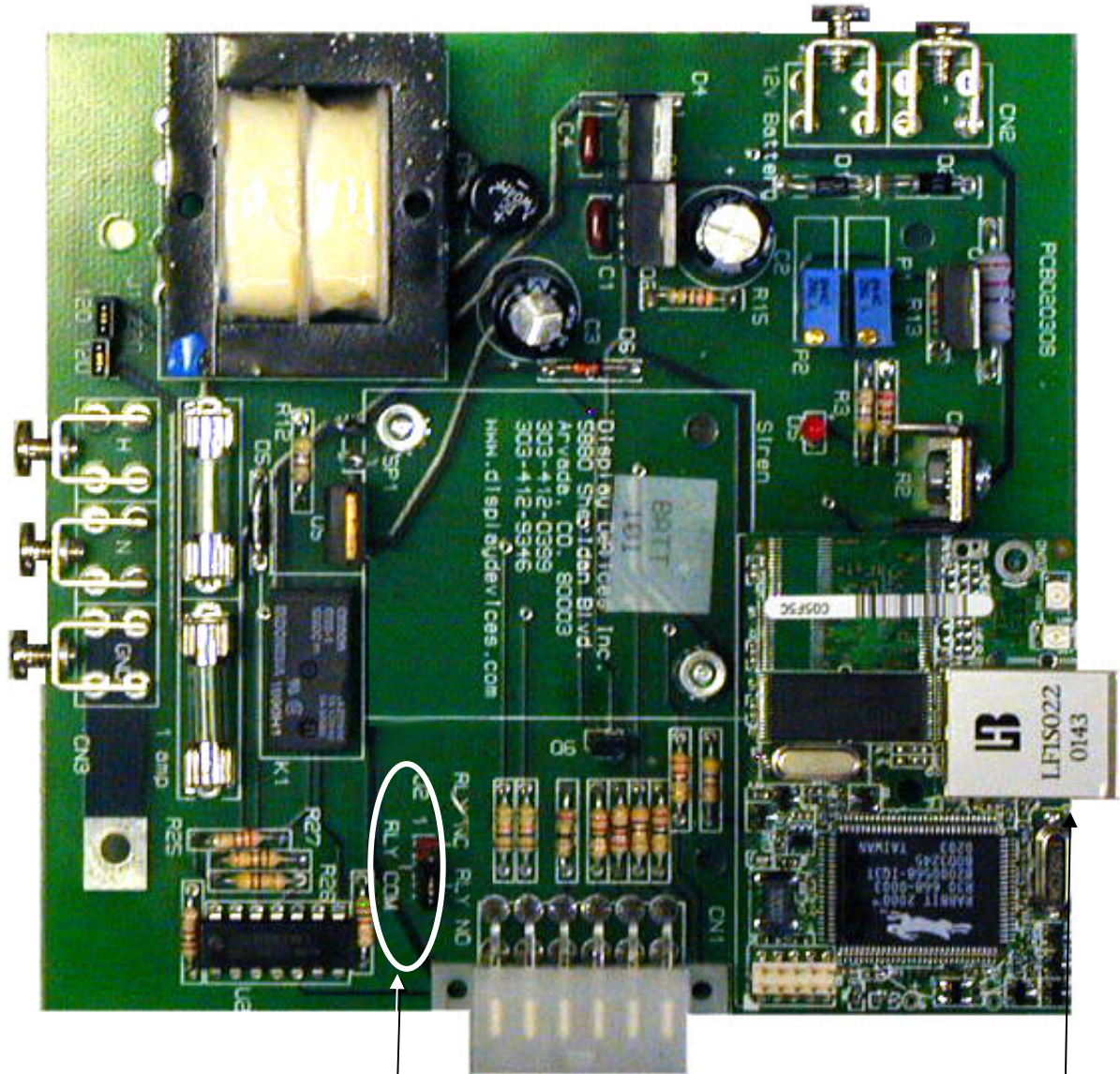


Close up of relay jumper



DISPLAY DEVICES

AT-LAN-PCM
Internal Circuit Board



NC / NO Relay Jumper

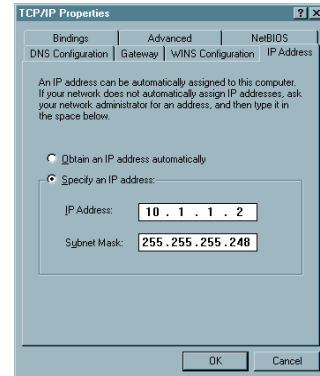
RJ 45 Connection

DISPLAY DEVICES

Gotcha Projector Alarm Software Installation

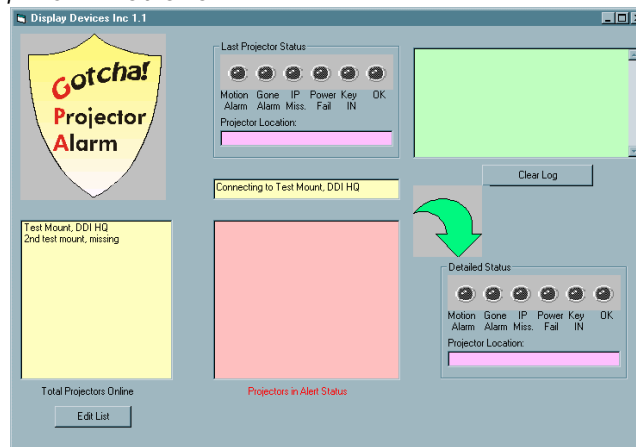
- 1.) Click Start, Run, Browse CD-Rom, Select Alarmnet.exe
- 2.) Follow installation process, reboot.
- 3.) Setup your computer to configure IP:
Click Start, Settings, Control Panel
Network, TCP-IP Properties.
Specify your IP address/subnet mask

10.1.1.1
255.255.255.248



Click Gateway, if one is installed, remove any Gateway listed and click OK.
Click DNS Configuration and then click Disable DNS and OK.
Reboot computer for changes to take effect.

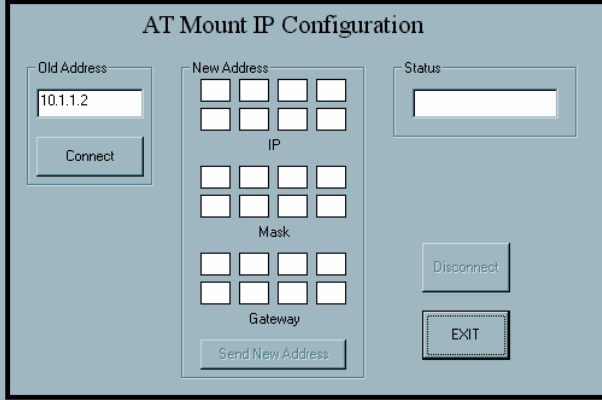
- 4.) Activate the software through Explorer: Click Start, Windows Explorer, Program Files, proalarm, Alarmnet.exe. Now is a good time to create a shortcut.
- 5.) Click on the Gotcha shield – **if the program experiences an error close the program and proceed with the following** (if no problem is experienced close the program and proceed to #6)
 - Click Start, Programs, MS-DOS prompt
 - From your root drive (typically C:) type the following:
C:>CD\windows\system enter
C:windows\system/> **regsvr32 dao350.dll** enter
 - Upon successful installation, type **EXIT** to return to Windows
- 6.) Connect the computer to the mount through the Ethernet port. Be sure to use a crossover cable for direct computer-to-mount or straight-thru cables when using a hub.
- 7.) Plug in the Maintenance Key and attach the battery
- 8.) Activate the software through Explorer. Click Start, Windows Explorer, Program Files, proalarm, Alarmnet.exe



DISPLAY DEVICES

9.) Click on the Gotcha Shield icon
BE SURE TO DOCUMENT THE NEW IP ADDRESS, MASK AND GATEWAY. IF YOU NEED TO CHANGE THE ADDRESS AND CANNOT REMEMBER IT WILL BE UNRECOVERABLE!

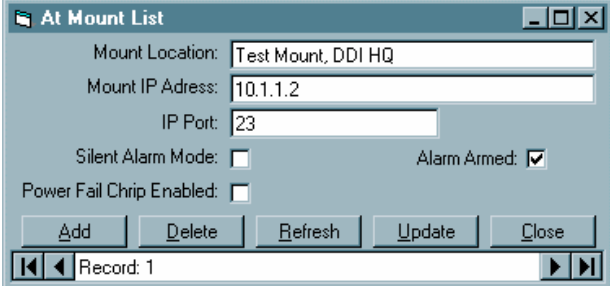
- 10.) Enter your New Address
Re-enter the new Address for verification
- 11.) Enter your Mask number
Re-enter the new Mask number for verification
- 12.) If using a Gateway:
Enter your Gateway number
Re-enter your Gateway number for verification



The screenshot shows the 'AT Mount IP Configuration' window. It has three main sections: 'Old Address' with a text box containing '10.1.1.2' and a 'Connect' button; 'New Address' with three numeric keypad sections for 'IP', 'Mask', and 'Gateway', and a 'Send New Address' button; and 'Status' with an empty text box, a 'Disconnect' button, and an 'EXIT' button.

- 13.) Click Connect
- 14.) Once the status box says connected, click Send New Address
- 15.) After verification click Disconnect, exit.

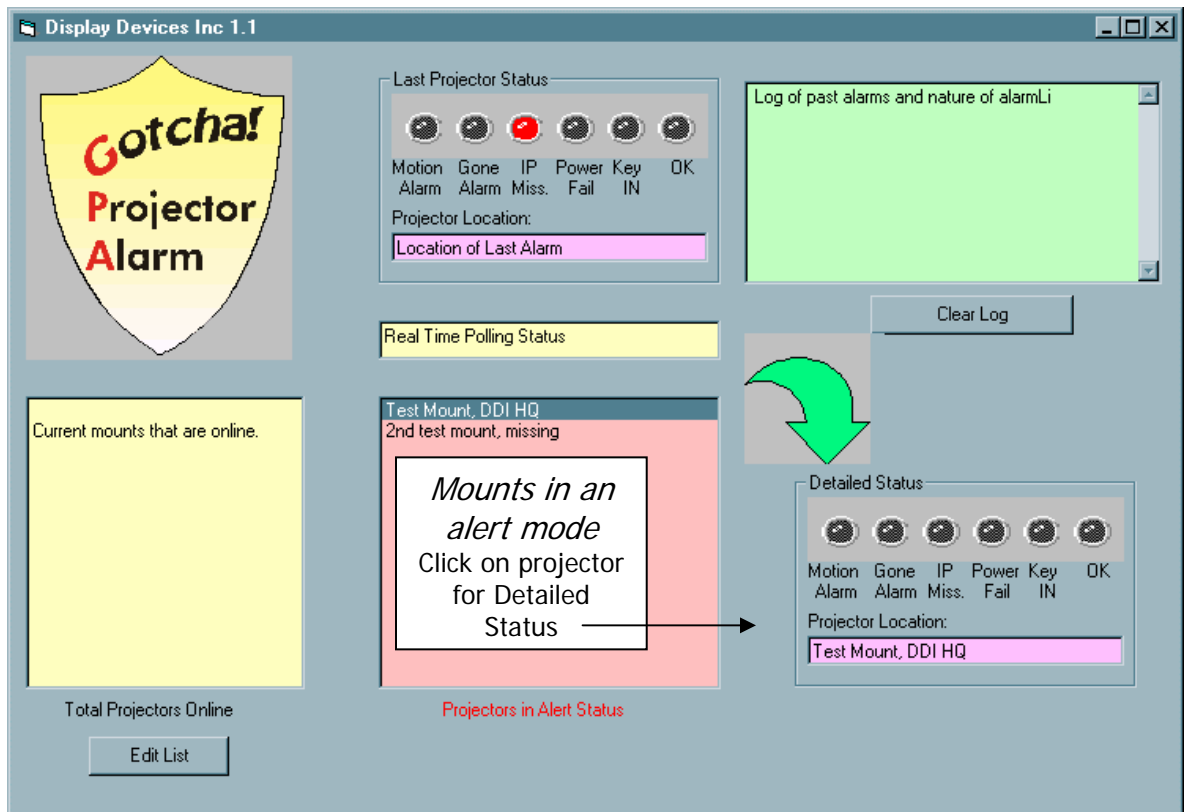
- 16.) Click Edit List
- 17.) Type your mount identification
- 18.) Type the mount IP Address
- 19.) IP Port must stay at 23 (unless you are using port forwarding – see the attached diagram)
- 20.) Click Update
- 21.) This menu allows you to adjust the variables to each and every mount. Silent Mode, Alarm armed, and Power Fail Chirp Enabling.
- 22.) Click Close



The screenshot shows the 'At Mount List' window. It contains several input fields: 'Mount Location' (Test Mount, DDI HQ), 'Mount IP Address' (10.1.1.2), and 'IP Port' (23). There are also checkboxes for 'Silent Alarm Mode' (unchecked), 'Power Fail Chirp Enabled' (unchecked), and 'Alarm Armed' (checked). At the bottom, there are buttons for 'Add', 'Delete', 'Refresh', 'Update', and 'Close'. A status bar at the very bottom shows 'Record: 1' with navigation arrows.

DISPLAY DEVICES

Gotcha Projector Alarm



Features

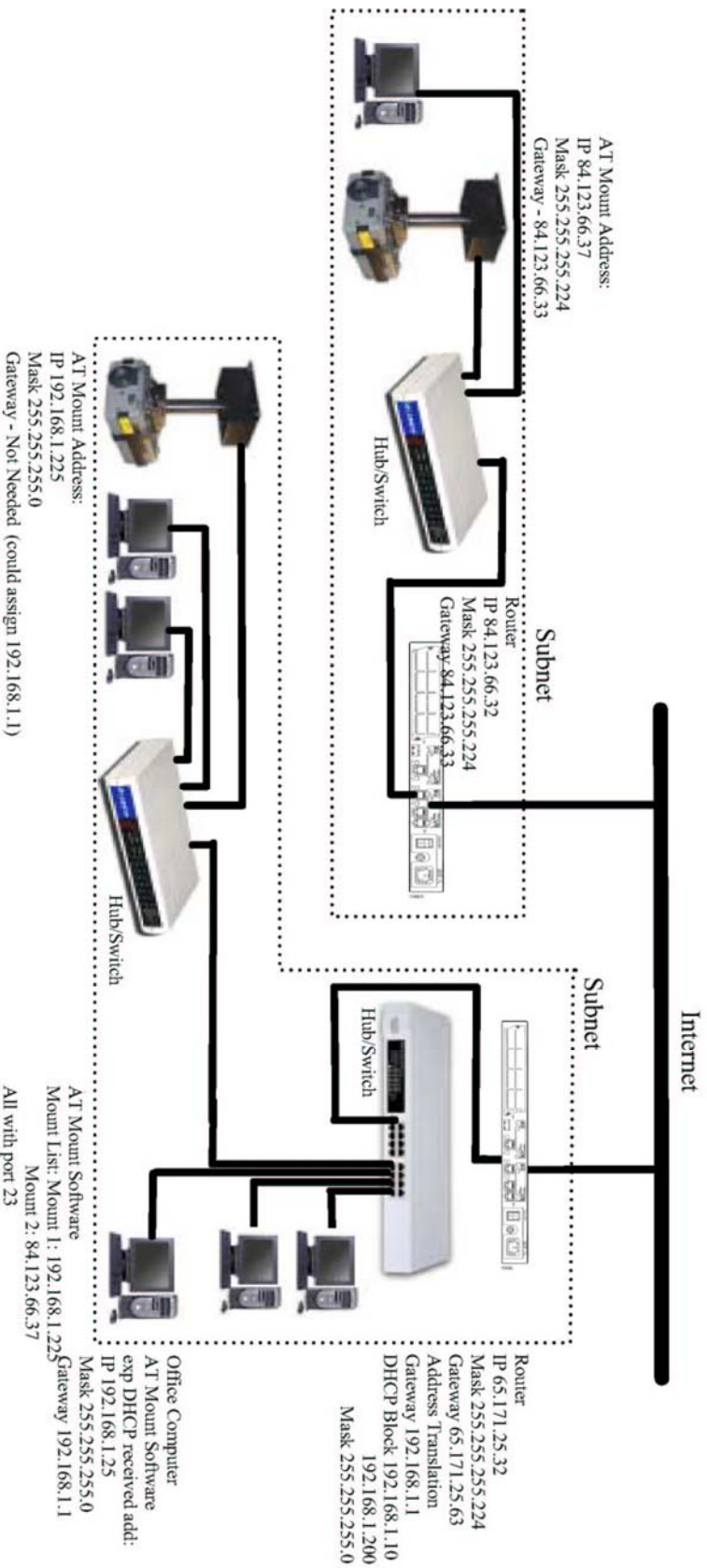
- Motion Alarm – senses motion of the mount or metal-to- metal contact
- Gone Alarm – the presence of the projector is not detected
- IP Miss – cannot connect with the IP address of the mount
- Power Fail – AC power to the mount is missing, operating on battery power
- Key IN – maintenance key is inserted, overriding the alarm features
- OK – all systems go

Note

If the LAN connection is lost, the mount will automatically engage full alarm status after 60 seconds. This includes power fail chirp and audible alarm.

DISPLAY DEVICES

AT-LAN-PCM Connection Example



DISPLAY DEVICES

AT-LAN-PCM Connection Example Using NAT and Port Forwarding

