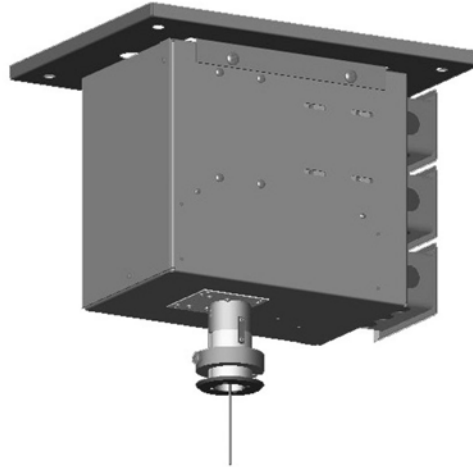


DISPLAY DEVICES

MicLift ML-8s / ML-25s

Installation Instructions



Structural attachment points will depend upon your specific installation. The MicLift is designed to hang above the finished ceiling so your microphone is slightly below the bottom of the finished ceiling. The actual mounting height will vary depending upon your architectural situation. Structural channel and threaded rods are common methods to install mounting points at the appropriate height above the finished ceiling. Extension barrels are available in 1.5” increments for longer length microphones.

NOTE

The lift is shipped fully assembled for installation into an unfinished ceiling application. To install in a finished ceiling, you must disassemble the lower limit switch prior to installation into the finished ceiling or ceiling tile.

The MicLift is designed to operate via our three-button remote or contact closures. See the Control Interface section for control assignments.

The unit is designed to be mounted above the bottom of the finished ceiling.

Do's and Don'ts

- ** Do not operate the lift up when the microphone cable is swinging – unit can jam.
- ** Do not replace or extend the factory-installed microphone cable.
- ** Do not operate the lift without the factory-installed weight (located at the end of the cable)

MINIMUM WEIGHT CAPACITY: 4OZ - MAXIMUM WEIGHT CAPACITY: 6.5OZ

The weight that is provided with the lift is 4 ounces. Call tech support if you need to remove the weight if your microphone assembly is over 4oz but under 6.5oz.

tel: 303.412.0399
fax: 303.412.9346

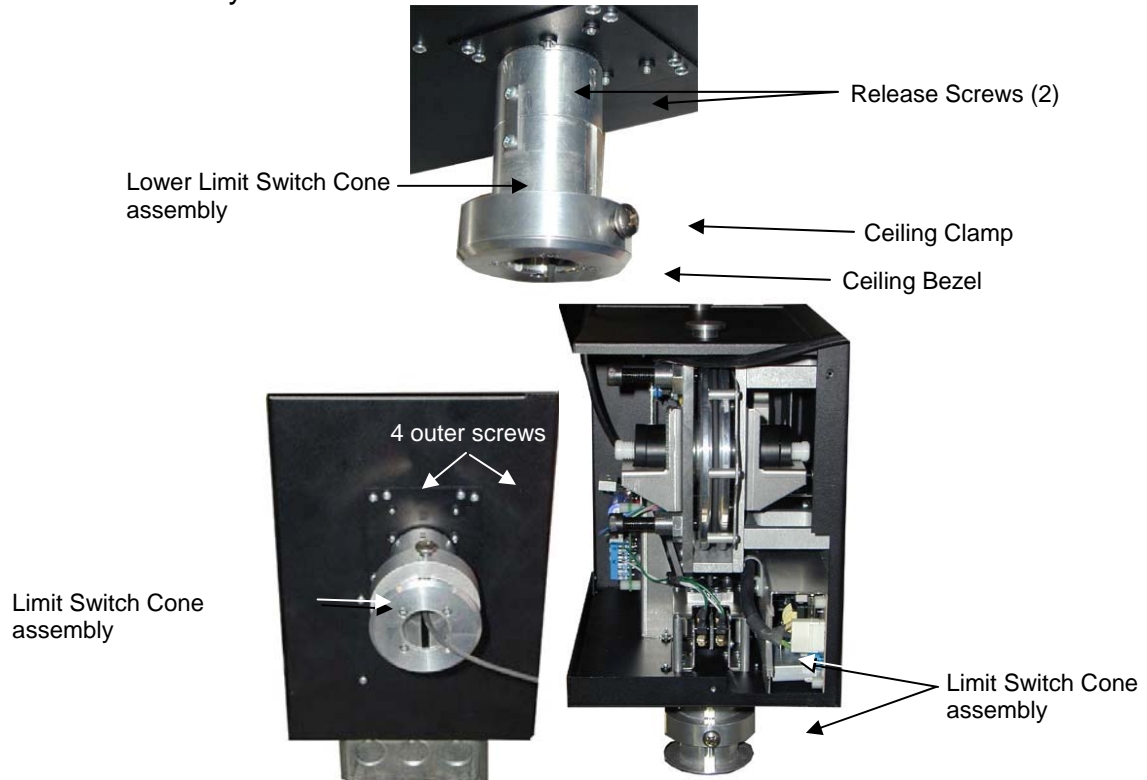
5880 Sheridan Blvd., Arvada, Colorado 80003
Pn 7899-00160

www.displaydevices.com
tech@displaydevices.com

DISPLAY DEVICES

TYPICAL INSTALLATION – *physical installation*

- 1.) Install the mounting plate above the bottom of the finished ceiling so the ceiling bezel will be flush with the bottom surface. Use ½” nuts/bolts/washers. Attach to structural channel or other solid mounting surface. Be sure the plate is level: front-to-back and side-to-side.
- 2.) Remove the (2) release screws from the lower half of the Limit Switch Cone Assembly / Bezel.



- 3.) Install the mounting plate using ½” hardware. Attach to structural channel or a solid mounting surface. Be sure the plate is level front-to-back and side-to-side.
- 4.) Add a plumb bob to the mounting plate at the indicator hole and hang the bob down to ceiling. This is the center point for the hole cutout location for the microphone assembly.
- 5.) Cut a 1.75” hole in the ceiling aligned with the plumb bob.
- 6.) Remove the (2) Release Screws of the lower Limit Switch Cone Assembly. Slide off over microphone cable / weight.
- 7.) Raise the lift to the mounting plate – insert the lugs into the key holes and slide to narrow side of key hole slot.
- 8.) Install the locking screws on the side and rear of the unit
- 9.) Place the ceiling clamp over the drilled hole and thread the microphone cable / mic / weight through the clamp and through the ceiling hole. Slide the microphone cable / mic / weight through the lower Limit Switch Cone Assembly. Now slide the lower-Limit Switch Cone Assembly up through the ceiling hole and ceiling clamp. Tighten the clamp screw to hold in place.

DISPLAY DEVICES

- 10.) Reinstall the (2) release screws that attach the lower Limit Switch Cone Assembly to the upper portion.
- 11.) Adjust the ceiling clamp to “sandwich” the ceiling material – tighten the lock down Phillips-head screw.
- 12.) Replace ceiling bezel – install four screws.
- 13.) If you’re installing this unit for purposes other than what the above installation procedure describes, please call Display Devices Technical Services at (303) 412-0399 for further assistance.

Optional Speed Adjustment – *Physical Installation*

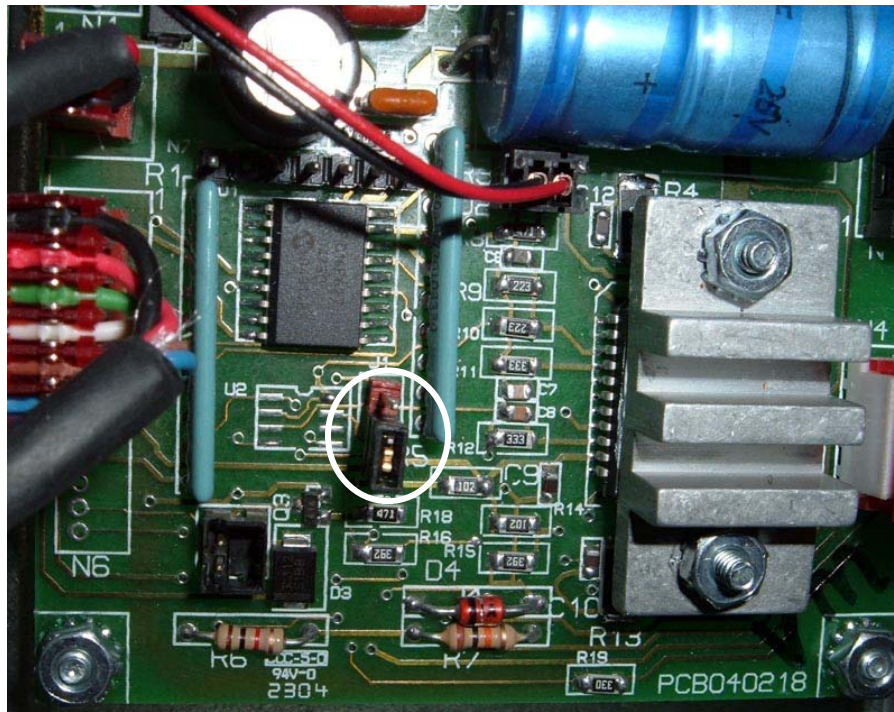
The MicLift’s lowering and raising speed can be changed from slow to fast.
The recommended speed is the factory default – slow.

Remove power to the unit.

Remove the side cover then remove the control board electronics cover. The jumper is not connected and must be placed on both pins.

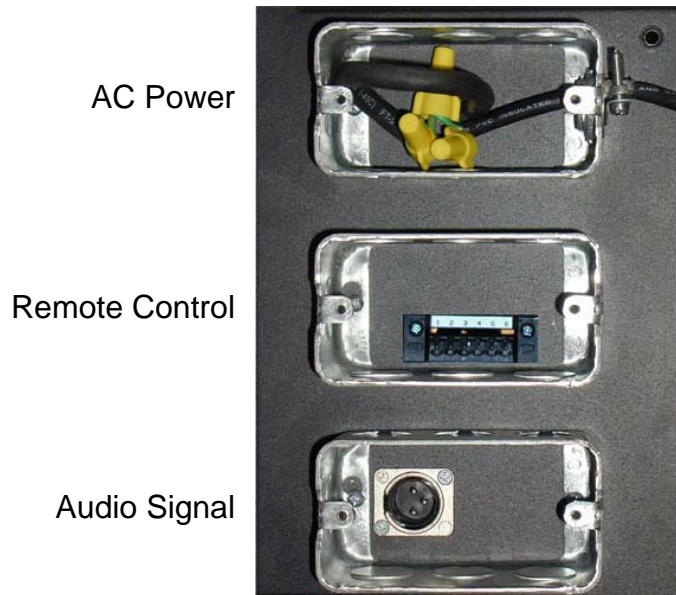
Slow speed – no jumper connected

Fast speed – jumper connected



DISPLAY DEVICES

Electrical, Signal and Control Installation



- 1 UP
- 2 DOWN
- 3 STOP
- 4 COMMON
- 5 12V trigger in
- 6 +5V out

- 1.) Remove the j-box cover plate and connect AC power leads with wire nuts: ground = green, neutral = white, hot = black.
- 2.) Connect the hardwired hand-held remote control to the 5-pin Phoenix connector in the center j-box.
- 3.) Connect audio signal to the 3-pin XLR-f.

Three-button control – Contact Closure

- 'Up' button to pin 1
- 'Down' button pin 2
- 'Stop' button to pin 3
- Common for all buttons to pin 4
- Pin 5 & 6 are not used

DISPLAY DEVICES

Programming Show Position

Programming can only be done with the three-button control. If other methods of triggering the lift are normally used, first program the lift with the remote and then configure the lift for the other trigger method.

1. Send lift to top position ('Up' button).
2. Press and hold 'Stop' button for ten seconds.
3. Press the 'Down' button. Lift will travel down. Press 'Stop' at the proper show position. **THIS MUST BE DONE IN ONE MOTION, DO NOT PRESS UP, DOWN, OR STOP FOR FINE-TUNING OF POSITION.**
4. At proper position, press and hold the 'Stop' button for 10 seconds.
5. Lift is now set. If you start the procedure and wish to quit after step 2, you must reset power to the lift before normal operation will resume.

Programming Ramping Distance

You may determine the location where the lift slows its acceleration. Programming can only be done with the three-button control. If other methods of triggering the lift are normally used, first program the lift with the remote and then configure the lift for the other trigger method.

1. Send lift to top position ('Up' button).
2. Press and hold 'Stop' button for 10 seconds.
3. Press the 'Down' button. Lift will travel down. Press 'Stop' at the position where you would like the microphone to begin slowing down. We recommend no less than six inches below the finished ceiling. **THIS MUST BE DONE IN ONE MOTION. DO NOT PRESS UP, DOWN, OR STOP FOR FINE TUNING OF POSITION.**
4. At proper position, press and hold the 'Stop' and 'UP' buttons for 10 seconds.
5. Lift is now set. Press 'Up' to send the lift to the home position. Press 'Down' to lower the lift, and 'Up' to send it to home position and verify where the ramping point is. If you start the procedure and wish to quit after step 2, you must reset power to the lift before normal operation will resume.

Microphone Cable

The balanced microphone cable is connected to the 3-pin XLR. The color code of the cable is braided/ground – pin 1, Blue/Blue with white stripe – pin 2, White/white with blue stripe – pin 3. It is very important that the weight is on the cable. If the weight is removed and you operate the lift, **YOU WILL DESTROY THE MICROPHONE AND LIFT!** Also, make sure any splice is below the weight near the microphone.

DISPLAY DEVICES

Optional Control Support

The next two control methods involve adding jumper wires on the Phoenix connector in the center j-box. They are presented here for information only; please contact DDI for further directions.

Low-Voltage Control signal and Single-Latching Contact

It is required that the lift is installed and the show position has been set. After setting show position, jumpers must be added to the connector as shown below.

Low voltage ($5\text{ vdc} < V < 24\text{ vdc}$) control signal:



Jumper from N4 Pin 1 to Pin 4, and N4 Pin 2 to Pin 4.

Trigger Voltage to pin 5.

Trigger Voltage ground to N4, pin 4.

(applied voltage sends lift up, no voltage sends lift down)

Single latching contact:



Jumper from N4 Pin 1 to Pin 4, and N4 pin 2 to pin 4.

Contacts between N4 Pin 5 and Pin 6.

(contact closed sends lift up, contact open sends lift down)