

# DISPLAY<sub>®</sub> DEVICES

## *TFT-50/70* **LCD Monitor Lift** Installation Manual



**READ ALL INSTRUCTIONS BEFORE BEGINNING INSTALLATION**

Installation notes	2
Physical Installation	2, 3
Electrical Installation	3
Contact Closure Operation	4
Mounting Methods	5
Drawing – all views	6
Drawing – bill of materials	7
Drawing – hole cutouts / mounting holes	8

*May 2005*

tel: 303.412.0399  
fax: 303.412.9346

[www.displaydevices.com](http://www.displaydevices.com)  
[tech@displaydevices.com](mailto:tech@displaydevices.com)

5880 Sheridan Blvd., Arvada, Colorado 80003

## TFT-50/70 LCD Monitor Lift - Installation Instructions

Thanks for purchasing a Display Devices lift product. We're sure your customer will enjoy this lift for years to come. Our products are designed to be maintenance-free saving you future service time. If you experience any difficulties, please contact us at 303-412-0399. Thank you for your support.

**It is the responsibility of the installer to ensure that this product is properly supported and meets all local building codes. DO ensure the ceiling structure is capable of holding at least four times the combined weight of the lift and LCD Monitor. This is a minimum requirement. Follow any local or state codes that apply to your specific area.**

**ATTENTION: This lift is designed for integration into furniture or cabinetry. The following instructions are based on installing the lift then installing the monitor.**

**The motor for the lift has a published duty cycle of 10%, meaning the motor should operate no more than six minutes per hour. We recommend not cycling the lift more than 10 times per hour.**

**This lift is designed to raise up from furniture, or, in the case of an inverted installation, lowered from a cabinet. When inverted, the lift may be mounted at the bottom or, by inverting the brackets, mounted from the top.**

**Shimming of the lift is acceptable depending on the millwork of your installation.**

Tools required:

Router/ Saw  
7/16" socket or open-end wrench  
#3 Phillips-head screwdriver  
5/16" Allen wrench

### **PHYSICAL INSTALLATION**

- 1.) Determine your mounting method – desk/top mount, desk/pedestal mount, cabinet/bottom mount or cabinet/top mount. Use a 7/16" socket or open-end wrench to remove the mounting brackets and gussets. Reposition the mounting brackets and gussets in the proper position for your method of mounting. See the attached mounting methods drawings (page 5).
- 2.) Determine the monitor's physical location in relation to the mount on the lift. If the monitor is higher than the top (or bottom) of the lift, you may need to shim the lift unit to compensate for the monitor's height.
- 3.) Depending upon your installation, you may need to connect AC power, route LCD Monitor signal/power cables and connect the remote. See Electrical Installation if this is required.
- 4.) See the enclosed drawing for lift mounting locations and hole placement. Use the reference line for monitor/lift opening and mounting hole locations.
- 5.) Cut the desired hole size in your cabinetry. This opening will be based on the horizontal width and thickness of your monitor. Be sure it is no smaller than the elevating portion of the lift.

# DISPLAY DEVICES

IP018-250 RevA  
TFT-50/70 Lift Series Installation

- 6.) Measure and mark mounting hole location – drill the hole size based on the size mounting hardware you use.
- 7.) Align the lift to drilled mounting holes. Attach with appropriate hardware.
- 8.) The Control/Power Supply box is located inside the lift unit and has no breakers or fuses – access is not required.

## **ELECTRICAL INSTALLATION and OPERATION**

The following should be performed by a licensed electrician:

- 1.) Remove j-box cover. Connect an AC power cord with wire nuts to the bare wires in the integrated j-box. Add strain relief on the AC power cable. Plug in the remote.
- 2.) If you are using a third-party control system you may choose to remove the hand-held remote and hard-wire the controls. Replace the cover and plug in AC power (there is no power on/off switch).
- 3.) Be sure to keep all cables clear of the lift mechanics.

This lift has two positions: show and stowed.

- 1.) Plug in the hand-held remote control in the integrated j-box.
- 2.) Press 'SHOW' button. Unit will raise/lower to the show position.
- 3.) Press 'HOME' button and the unit will retract.
- 4.) If the 'STOP' button is pressed while the unit is traveling, it will stop at that point.

## **PHYSICAL INSTALLATION continued**

- 9.) From the show position, remove the (4) Phillips-head screws and washers (#38, 32, 33) which go through the rear of the front mounting panel (#2).
- 10.) Align the mount to the monitor and attach with (4) M4x10 Phillips-head screws.
- 11.) Align the mount to the front mounting panel and reinstall the (4) Phillips-head screws and washers. There are a series of mounting holes in ½" increments. Determine the best position before installing.
- 12.) Loosen the mount's 5/16" Allen head, adjust the tilt and tighten the Allen bolt.
- 13.) Attach the monitor signal and power cables. In a desktop configuration the cables can route below the closure panel (see 14). If you are using the unit in an inverted fashion, leave a cable loop behind the monitor and secure on the prepunched holes on the mounting bracket.
- 14.) If required or desired, you may use the closure panel (#9). Remove the 8-32 Phillips-head screws on the closure bracket (#10), insert the closure panel and replace the closure bracket and screws.
- 15.) Retract the lift. Carefully monitor the travel in case the monitor collides with the table/cabinet. Press STOP to discontinue movement as necessary.
- 16.) When installing in a desk mount configuration, it is recommended that the shroud (#14) be added to prevent damage to the monitor.

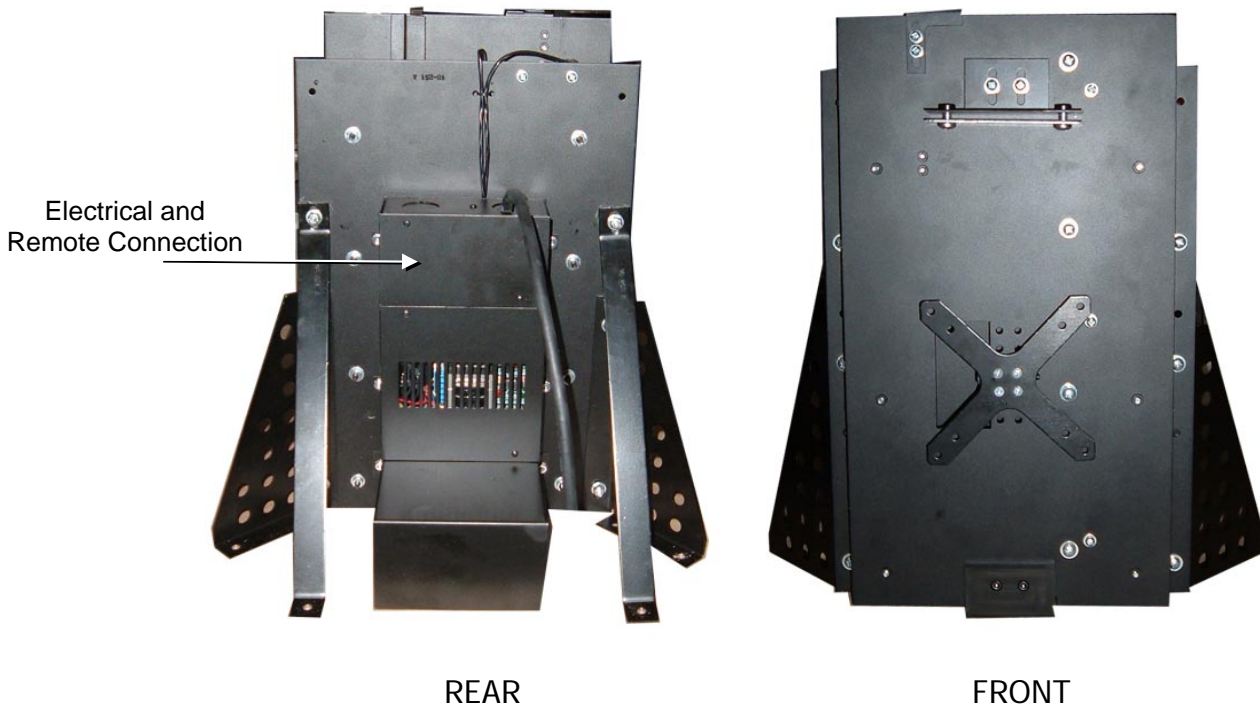
## CONTACT CLOSURE OPERATION

After the show position has been programmed, you may connect the unit to a third-party control system (AMX or Crestron type). Connect your system as follows:

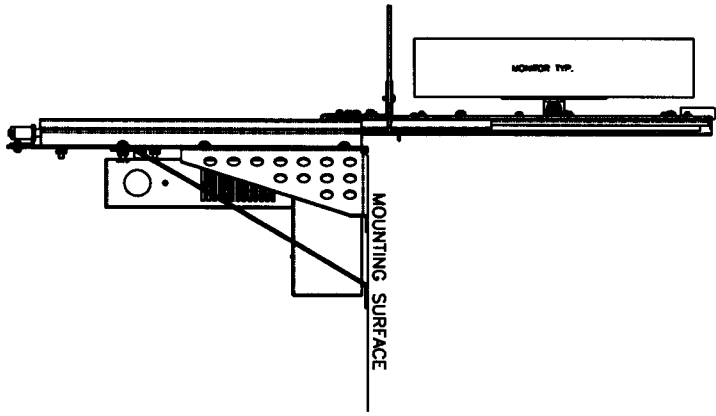
Installation in desktop configuration:

- 1 = SHOW (extended)
- 2 = HOME (retracted)
- 3 = STOP
- 4 = COMMON

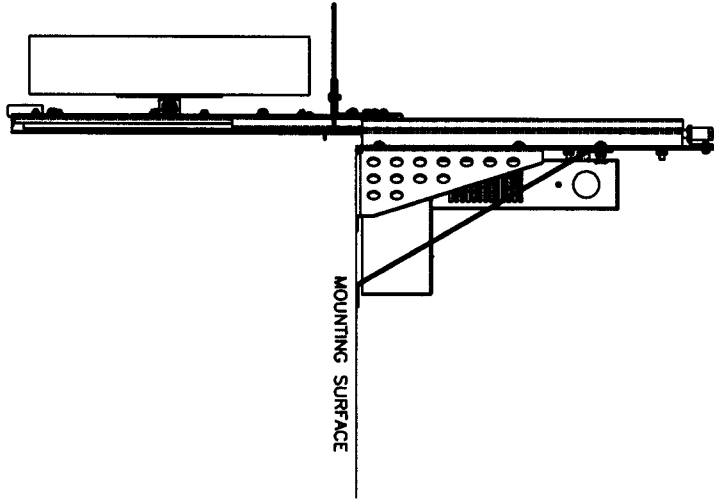
Inverted in Ceiling Mount position



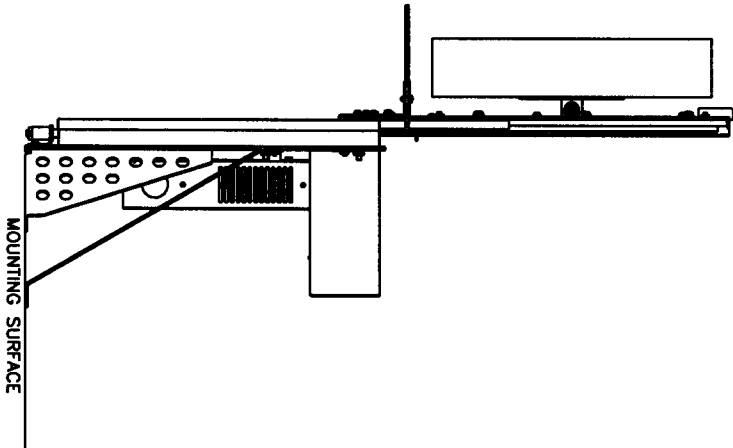
DESK TOP MOUNT



CABINET BOTTOM MOUNT



DESK BOTTOM MOUNT



CEILING TOP MOUNT

